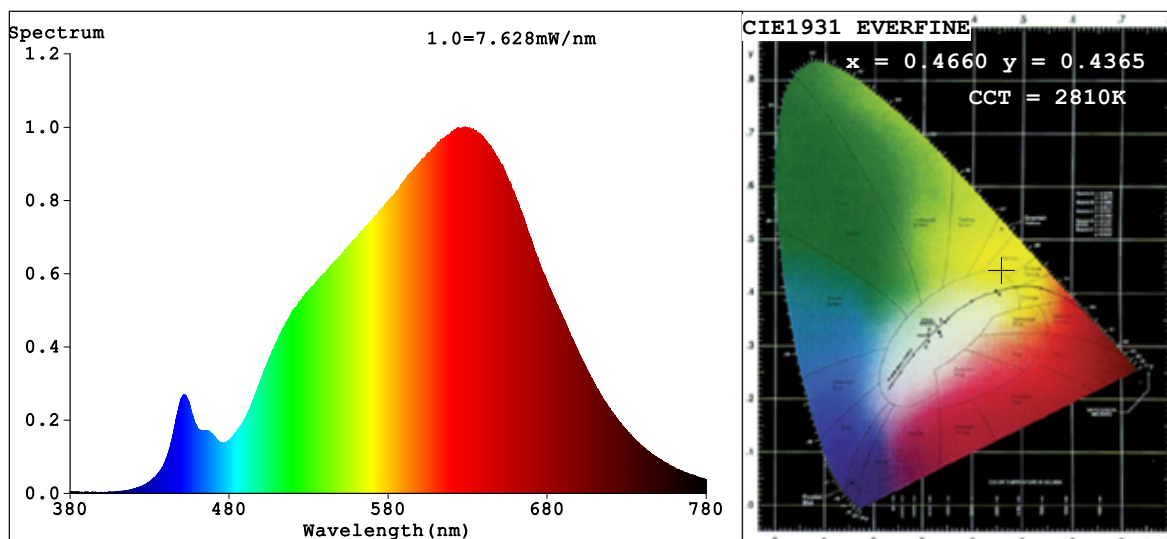


Spectrum Test Report



Color Parameters:

Chromaticity Coordinate: $x=0.4660$ $y=0.4365$ $u'=0.2551$ $v'=0.5377$
 CCT=2810K (Duv=0.0088) Dominant WL: $\lambda_d = 581.2\text{nm}$ Purity=70.9%
 Ratio: R=24.6% G=73.5% B=1.9%; Peak WL: $\lambda_p = 628.6\text{nm}$ FWHM=167.2nm
 Render Index: Ra=89.4 CRI=85.0 TM30: Rf=89 Rg=92 Lav=608.8nm
 R1 =89 R2 =91 R3 =93 R4 =91 R5 =87 R6 =88 R7 =96
 R8 =82 R9 =54 R10=78 R11=90 R12=68 R13=88 R14=95 R15=84

Photo Parameters:

Flux = 377.1 lm Eff. : 92.43 lm/W $\Phi_e = 1.290$ W

Electrical parameters:

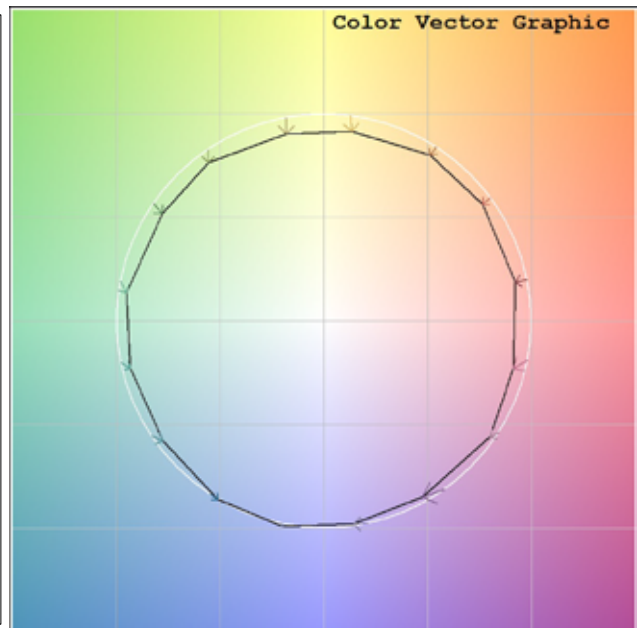
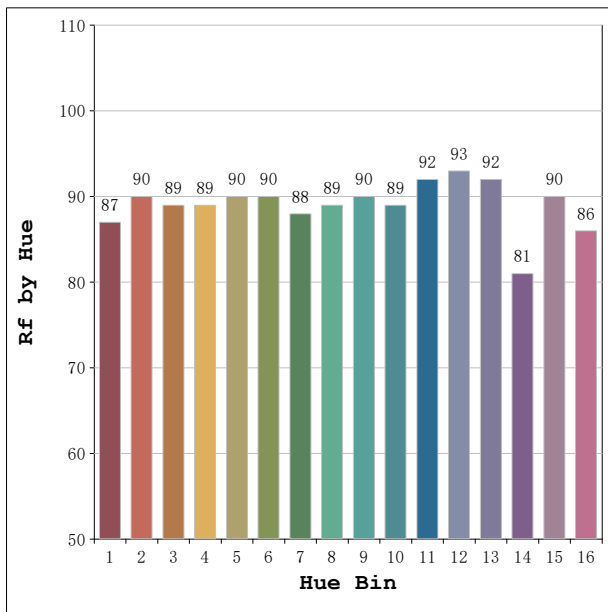
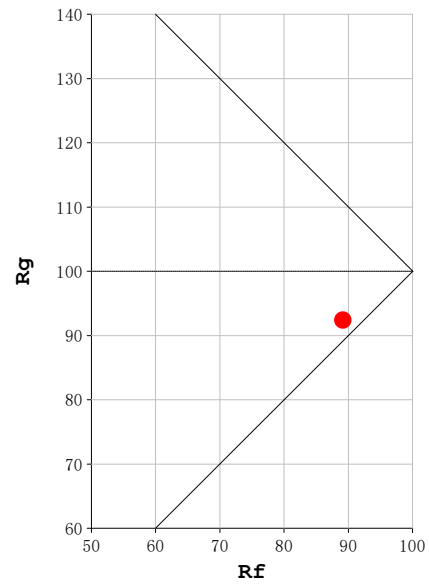
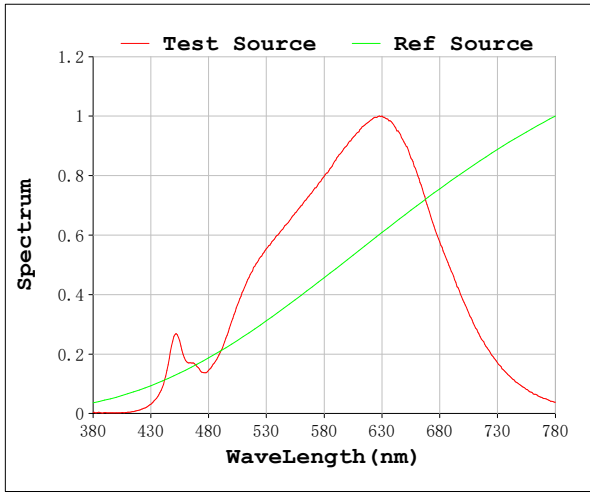
V = 11.998 V I = 0.3400 A P = 4.079 W PF = 1.000

Status: Integral T = 4015 ms $I_p = 52259$ (80%)

Model: Ecoled Rubi pro 2800K
 Tester: Sergio Carneros
 Temperature: 25Deg
 Manufacturer: Luz Negra.S.L

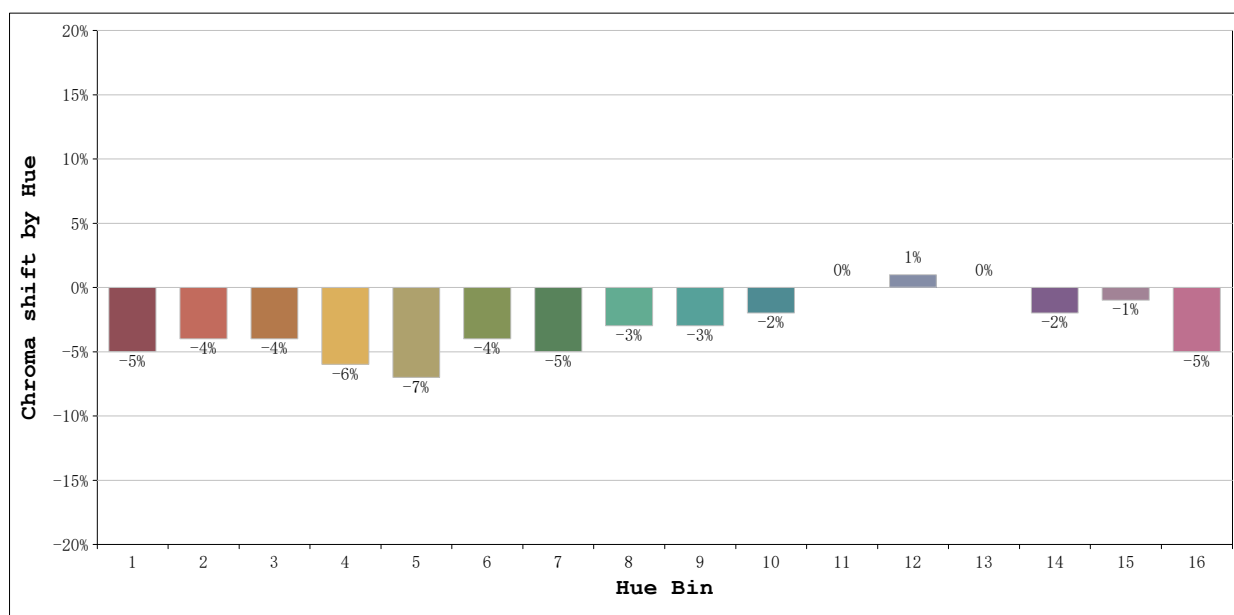
Number: 30.088
 Date: 2026-04-05 09:45:16
 Humidity: 57%
 Remarks: 100cm Tira flexible

Rf: 89 CCT: 2810 K u': 0.2551
Rg: 92 Duv: 0.0088 v': 0.5377



Model:Ecoled Rubi pro 2800K
Tester:Sergio Carneros
Temperature:25Deg
Manufacturer:Luz Negra.S.L

Number:30.088
Date:2026-04-05 09:45:16
Humidity:57%
Remarks:100cm Tira flexible



			Graphic shift(%)	
Hue Bin	Hue Angle	Rf	Chroma	Hue
1	0.0° - 22.5°	87	-5	0
2	22.5° - 45.0°	90	-4	0
3	45.0° - 67.5°	89	-4	0
4	67.5° - 90.0°	89	-6	-1
5	90.0° - 112.5°	90	-7	1
6	112.5° - 135.0°	90	-4	3
7	135.0° - 157.5°	88	-5	2
8	157.5° - 180.0°	89	-3	5
9	180.0° - 202.5°	90	-3	4
10	202.5° - 225.0°	89	-2	5
11	225.0° - 247.5°	92	0	5
12	247.5° - 270.0°	93	1	2
13	270.0° - 292.5°	92	0	-6
14	292.5° - 315.0°	81	-2	-10
15	315.0° - 337.5°	90	-1	-3
16	337.5° - 360.0°	86	-5	-4

Model:Ecoled Rubi pro 2800K
Tester:Sergio Carneros
Temperature:25Deg
Manufacturer:Luz Negra.S.L

Number:30.088
Date:2026-04-05 09:45:16
Humidity:57%
Remarks:100cm Tira flexible